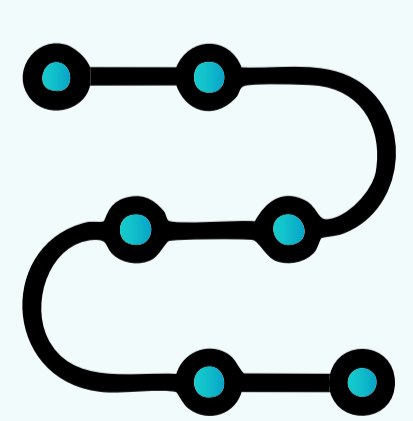


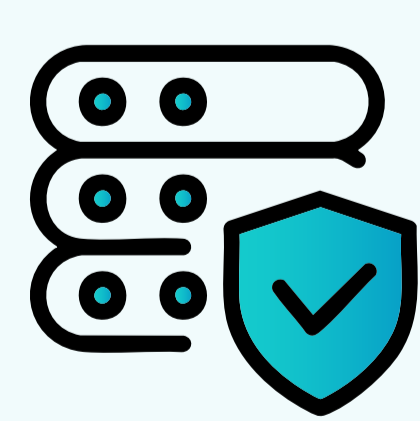


● Customer Success Story

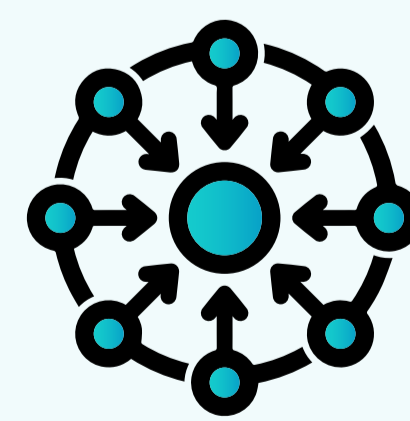
Aquarelle's Operational Transformation with WFX Apparel ERP



End-to-End
Integration






Better Data
Security



Global Data
Access

AQUARELLE

About The Brand

 Mauritius, Madagascar & India  7,500  Apparel Manufacturing

Incorporated in 2007, Aquarelle India and Aquarelle Mauritius are subsidiaries of Aquarelle International Ltd. They, along with Laguna Clothing, operate under the CIEL Textile Group—an influential force in global apparel manufacturing.

- CIEL Textile is headquartered in Mauritius, with manufacturing setups in India, Madagascar and Bangladesh.
- Specializes in men's casual and denim shirts, catering to global retailers/brands across the US, Europe, Asia, Australia, and the Gulf markets.
- Aquarelle International is vertically integrated with an annual production capacity of over 12 million pieces, with seven production facilities across three countries.
- Committed to ethical and sustainable business practices, including operating several LEEDS-certified eco-friendly factories.

Challenges

Before WFX, Aquarelle's operations were largely managed using traditional tools like Excel. While this approach provided familiarity and flexibility, it also had limitations as the company continued to scale. As the team grew, they needed better transaction control and also realized the need for data validation systems to avoid any errors and manipulation.





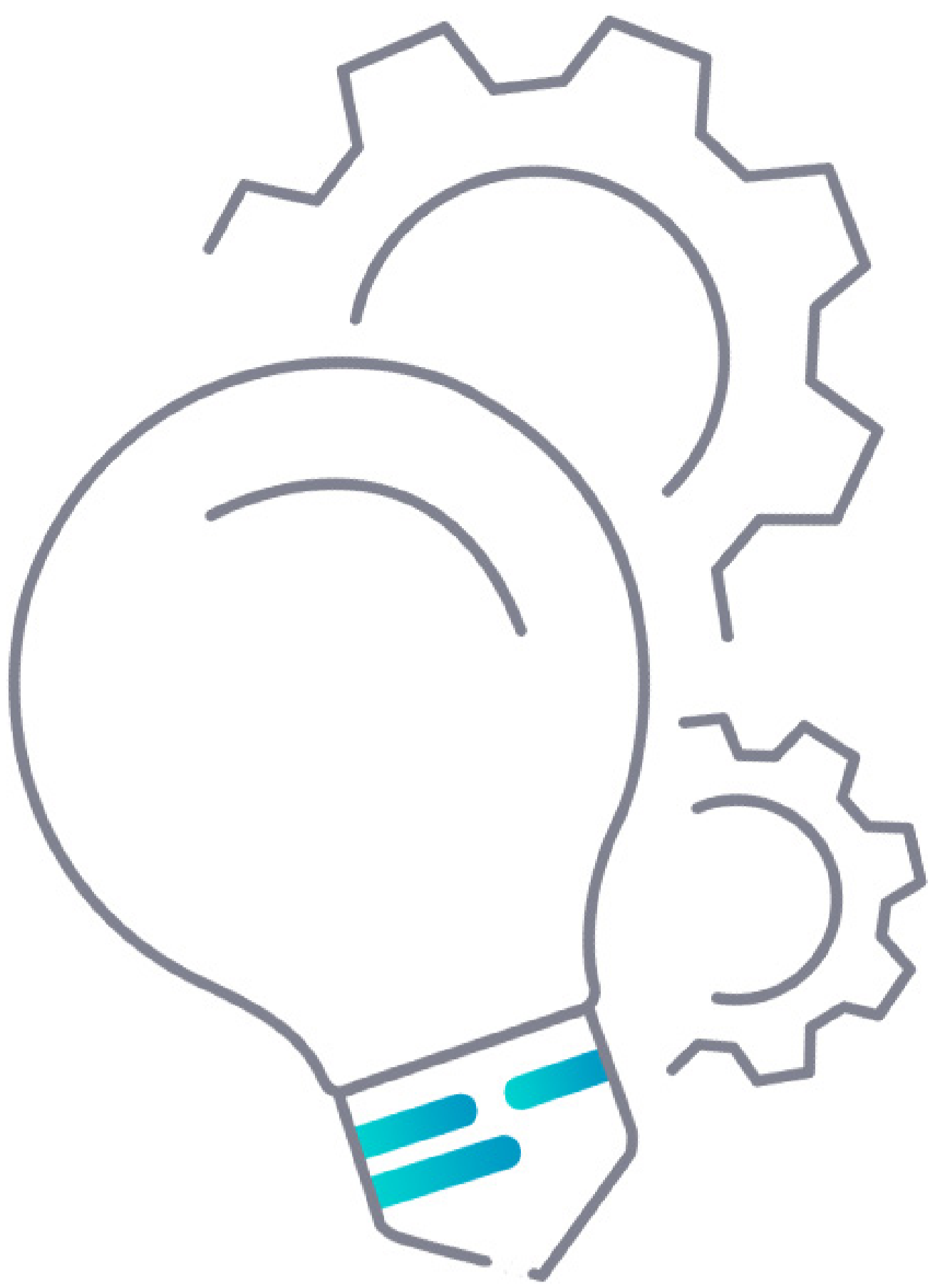
Before implementing WFX ERP, we relied on Excel, which gave us a degree of adaptability. However, as we grew, the need for a more robust system became apparent to help us address inefficiencies and inconsistencies that come with rapid expansion.”



- Ravi Prakash
Group Head - Digital Transformation & IT, CIEL Textile

The Aquarelle team recognized opportunities for improvement that would enhance their operational efficiency and scalability:

- **Scalability Concerns:** Excel served well initially, but managing increasingly complex operations began to reveal its constraints, particularly in real-time collaboration and data integrity.
- **Need for Integration:** Without an integrated digital system, there was a growing realization that more cohesive processes could improve efficiency and transparency across departments.
- **Data Management and Security:** Data was primarily handled manually, which, although workable, presented some challenges with traceability and risk management for compliance.
- **Operational Complexity:** As the scale and complexity of operations increased, reliance on manual processes highlighted the need for standardized, automated systems to ensure consistency.



Challenges

- Scalability Concerns
- Need for Integration
- Data Management and Security
- Operational Complexity



Solution

Aquarelle’s transition to WFX began in 2015-16, following a comprehensive market search where they evaluated various ERP solutions, including Stage, Oracle, and Datatex. Aquarelle chose WFX due to its ability to meet their specific requirements.

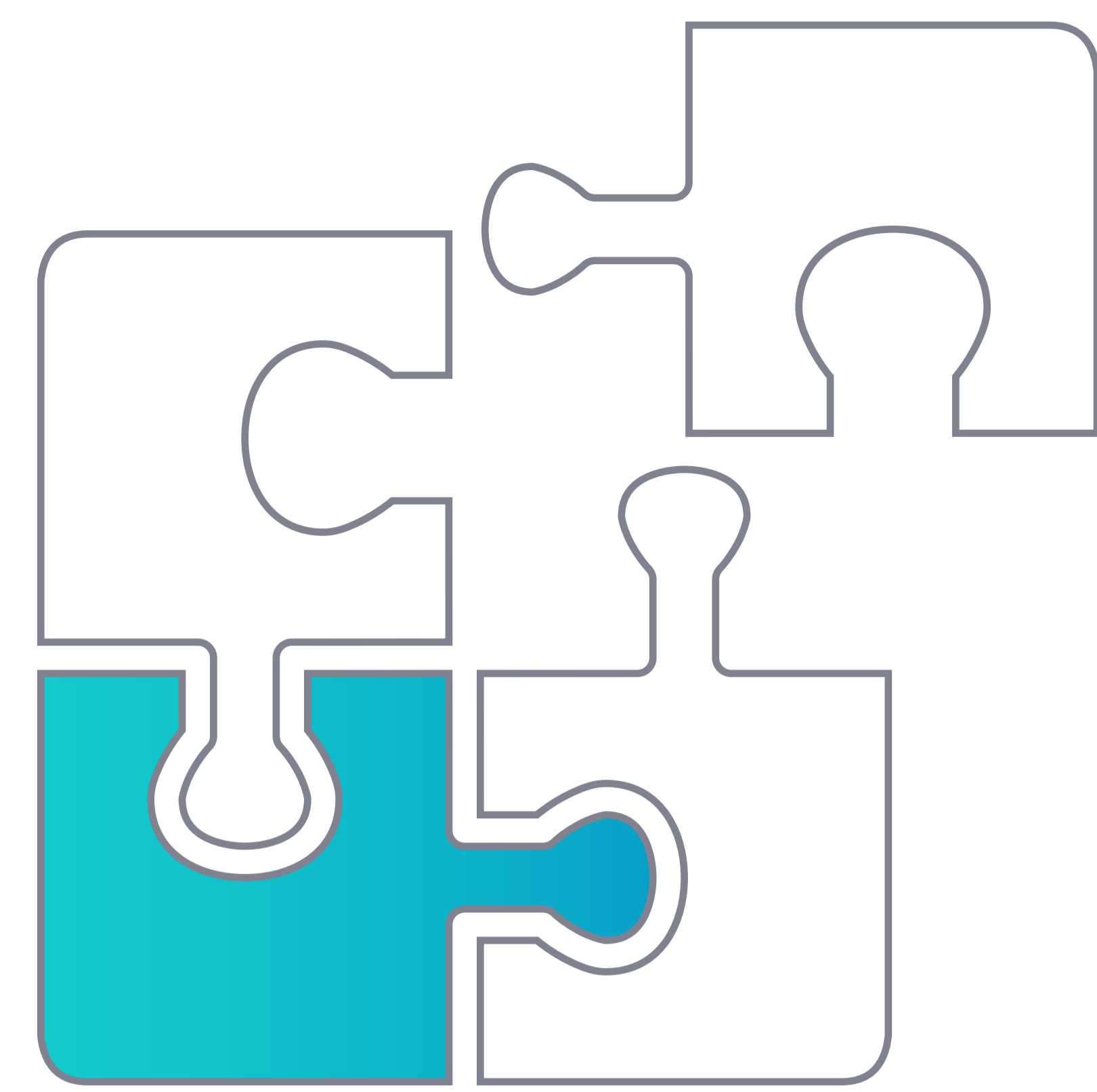
“The transition to WFX ERP was smooth and systematic. The implementation team guided us through blueprinting, gap analysis, and customization. Their deep domain expertise ensured a successful deployment, and the system has since delivered on all our business needs, making it an invaluable tool for our operations.”



- Ravi Prakash
Group Head - Digital Transformation & IT, CIEL Textile

The implementation process was methodical and involved extensive gap analysis, system customizations tailored to specific business needs, and rigorous training sessions led by WFX's functional teams.

- **System Selection:** Aquarelle chose WFX for its SaaS model and browser-based functionality, aligning with the company’s need for a scalable and accessible solution.
- **Stakeholder Engagement:** Extensive demonstrations and discussions with core users and management ensured buy-in and tailored the system to meet specific business needs.
- **Integration:** Ensured all data was interconnected, enhancing the flow and accessibility of information across departments.
- **Phased Rollout:** After initial success in India, WFX ERP was also rolled out at Aquarelle Mauritius, and then at Laguna India, another vertical of the CIEL group, December 2023.



Solution

- System Selection
- Stakeholder Engagement
- Integration
- Phased Rollout



Results

Since deploying WFX, Aquarelle has built on its existing operational foundation to achieve new levels of efficiency and data integrity. The ERP system has integrated processes from order receipt to payment, connecting procurement, inventory, warehousing, production, and financials, all linked seamlessly with production and logistics—in one workflow.

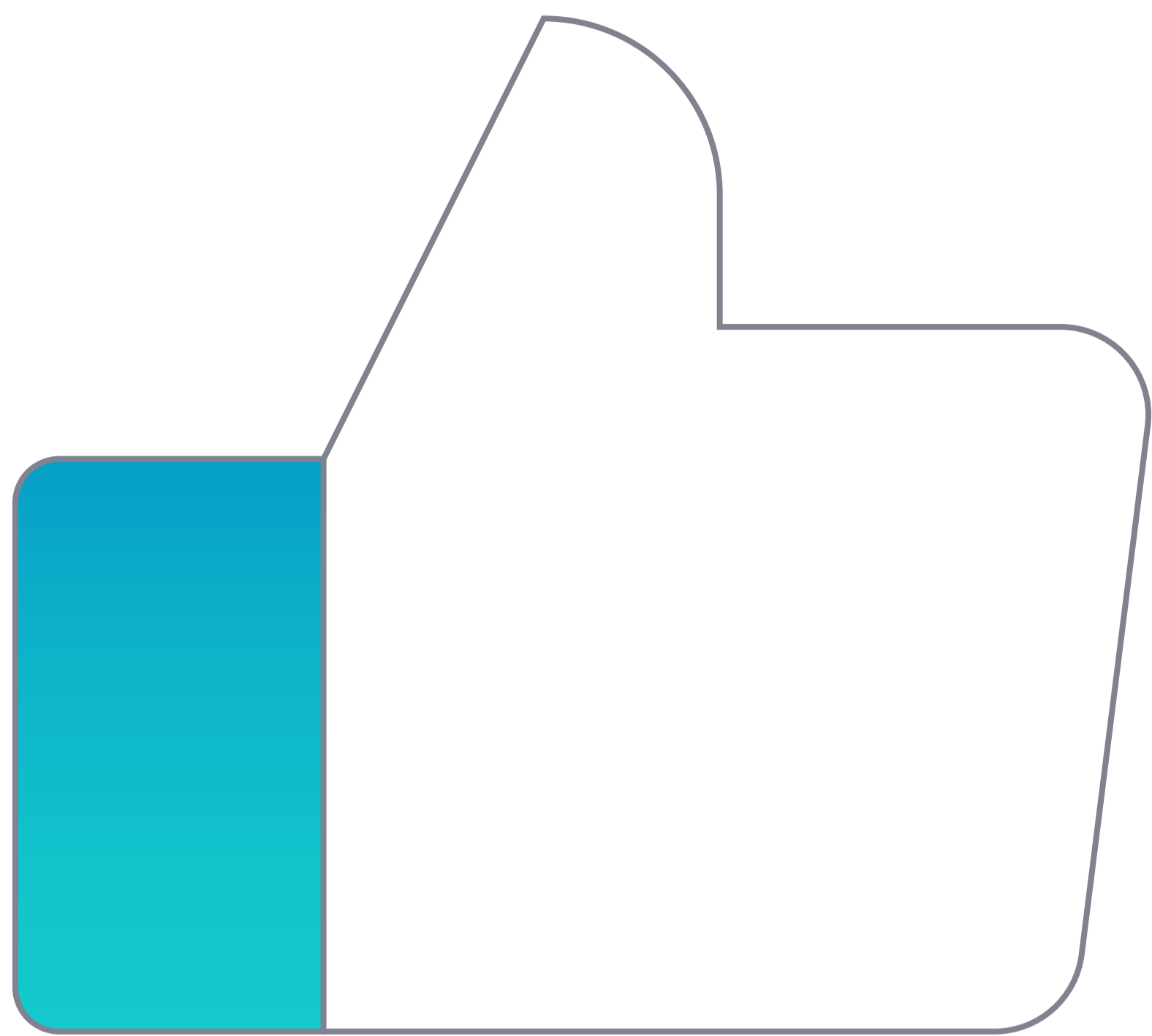
“With WFX ERP, we now have total control over our end-to-end processes. The system's integrated approach has minimized leakages and ensured default controls are in place. Our financials, supplier management, and order tracking are all seamlessly connected, providing us with comprehensive visibility and efficiency.”



- Ravi Prakash
Group Head - Digital Transformation & IT, CIEL Textile

The transition has amplified the company's capacity for operational excellence:

- **Streamlined End-to-End Processes:** From order receipt to payment, WFX ERP provides a seamless flow, minimizing manual inputs and reducing the risk of errors.
- **Robust Security Measures:** WFX ERP provided an additional layer of security to data management, supporting existing practices and bolstering compliance with international standards.
- **Time Savings:** Automating several manual tasks and centralizing data has allowed departments to operate faster and focus more on strategic activities.
- **Remote Access:** The browser-based system has allowed for more flexible operations, giving teams the ability to stay connected across locations, which was an important upgrade over their previous Excel-based approach.
- **Real-Time Data:** Managers now have real-time visibility across all stages, which enhances decision-making and ensures smoother collaboration among departments.



Results

- Streamlined End-to-End Processes
- Robust Security Measures
- Time Savings
- Remote Access
- Real-Time Data
- Visibility Across Departments
- Process Standardization
- User-Friendly Interface

“The WFX system has decreased our people dependency. The user-friendly interface makes it very easy for new hires to get up to speed quickly. Unlike heavy systems like Oracle or SAP, WFX is intuitive and efficient, so it doesn't take much time for people to understand the system.”

-Ravi Prakash
Group Head - Digital Transformation & IT, CIEL Textile

- **Visibility Across Departments:** Clear visibility into operations across all departments and geography helps with better coordination and resource planning.
- **Process Standardization:** Ensures consistency in operations across different locations, enhancing overall operational quality.
- **User-Friendly Interface:** WFX ERP's intuitive interface, compared to more complex systems, has helped improve user adoption and productivity among staff.



WFX has provided us tremendous benefits over the past seven to eight years. The team's involvement from implementation to post-implementation support has been exceptional. The system has also matured through collaboration, meeting our expanding needs. WFX's continuous investment in technology upgrades and new features has kept us ahead of the curve."



- Ravi Prakash

- Group Head - Digital Transformation & IT, CIEL Textile



Discover how our digital transformation solutions can help you get to market faster, become more sustainable, and streamline your operations for scalable success.

[Book Demo](#)

[More Case Studies →](#)