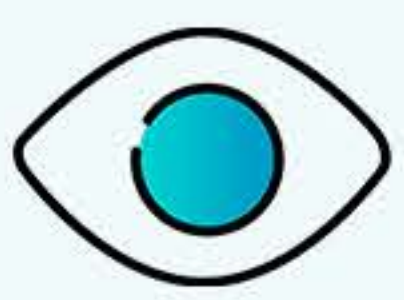




● Customer Success Story

SAPL's Operational Transformation with WFX Apparel ERP



Increased
Visibility



Better Financial
Management



Time
Savings



About The Brand

Mumbai, India 5,000 Apparel Manufacturing

Established in 2001, SAPL Industries Private Limited (SAPL) has established itself as a leading apparel manufacturer, specializing in a wide range of clothing for both men and women.

- Headquartered in Mumbai, SAPL has a significant presence in Bangalore, Mumbai, and Odisha.
- Employing over 5,000 people, SAPL serves prestigious clients across the UK, Europe, and the USA, including high-profile retailers like Primark and American Eagle Outfitters.
- SAPL is compliant with SMETA, BSCI, and CT-PAT standards, ensuring ethical and sustainable business practices.
- With 5 factories currently in operation, SAPL is planning to expand further by adding another factory soon.

Challenges

Prior to the integration of WFX, SAPL relied on basic tools such as Excel for managing operations. This method, though familiar and widely used, was fraught with challenges that significantly hindered the company's efficiency and scalability as it expanded its global footprint.

“ Before WFX, the vulnerability of using Excel was a constant concern—there was no way to make sure that data was not being rubbed and rewritten. Integrating a robust system like WFX was not just a necessity but a strategic decision to safeguard our data and streamline our processes.



- Arun Deep
Assistant Manager - MIS (ERP), SAPL Industries Pvt Ltd



Some of SAPL's challenges before WFX included:

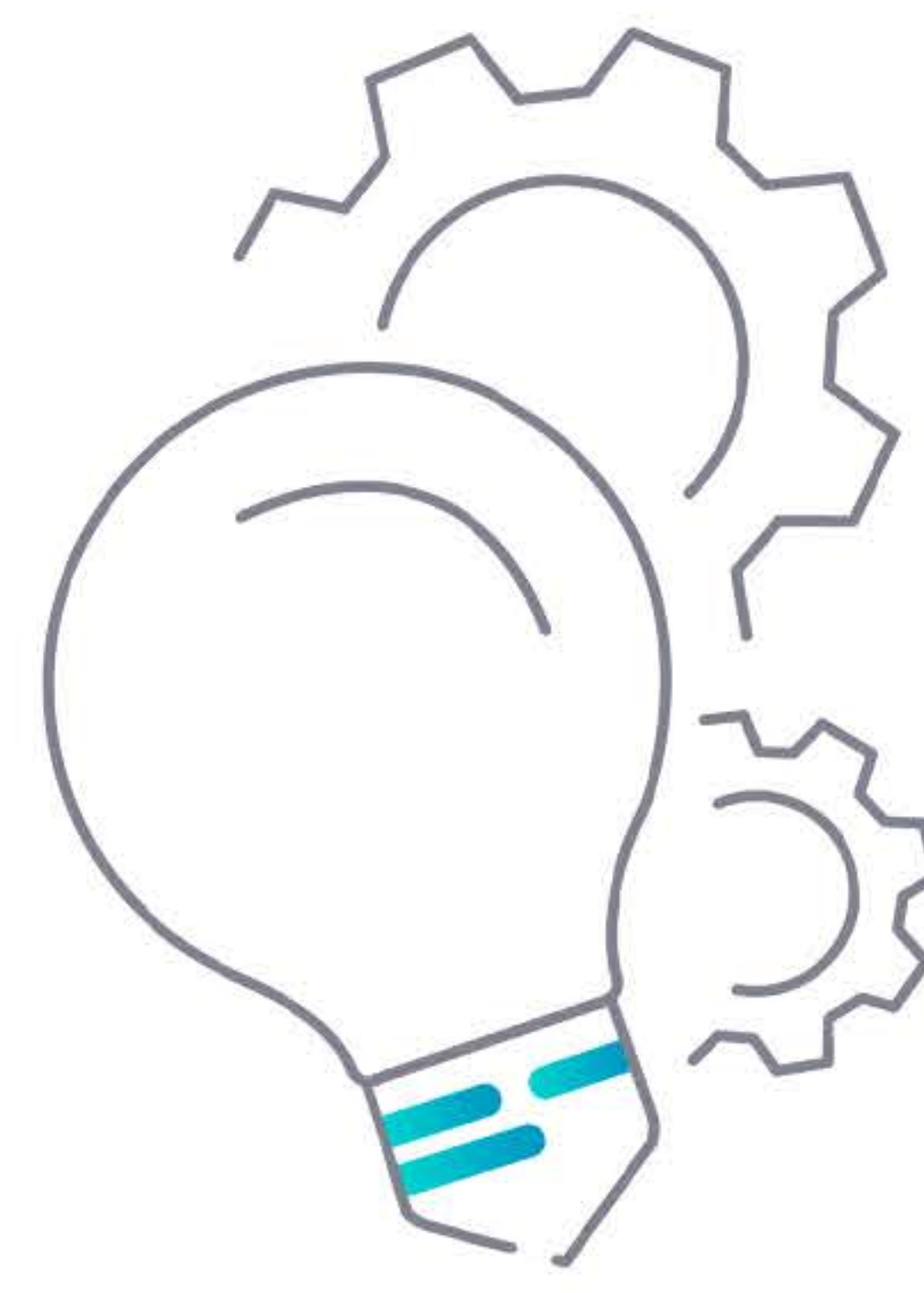
- **Data Vulnerability:** Excel's lack of security features made SAPL's critical data susceptible to being altered or deleted, which could lead to inconsistencies and errors in reporting.
- **Inefficiency:** The manual entry and maintenance of data were time-consuming and prone to human error.
- **Scalability Issues:** As SAPL grew, the limitations of Excel became evident, with the tool being unable to efficiently handle the increasing complexity and volume of data.
- **Lack of Integration:** There was no way to seamlessly integrate data across various departments, leading to disjointed operations.

Solution

The decision to implement **WFX Apparel ERP** was driven by the need for a more robust and integrated system. Arun Deep, who has over 13 years of experience using WFX (nine of which have been at SAPL), shared his insights into the deployment of WFX ERP at SAPL

The implementation process included:

- **Initial Setup:** Started in 2014, focusing on inventory management including costing, tech pack creation, and purchase orders.
- **Financial Module Integration:** Introduced in 2018, this module faced initial challenges but eventually streamlined financial operations.
- **Integration:** To ensure all data was interconnected, WFX was integrated with FastReact, enhancing the flow and accessibility of information.
- **End-to-End Integrated System:** WFX provided a structured process flow, requiring completion of each step before proceeding to the next, ensuring accountability and precision in operations.



Challenges

- Data Vulnerability
- Inefficiency
- Scalability Issues
- Lack of Integration

Solution

- Initial Setup
- Financial Module Integration
- Integration
- End-to-Eng Integrated System



The journey to fully integrate WFX into our systems was a transformative experience for SAPL. From inventory management to syncing with FastReact, the implementation process, although intense, ultimately crafted a more cohesive and efficient operational framework within our company.

- Arun Deep

Assistant Manager - MIS (ERP),
SAPL Industries Pvt Ltd

Benefits

Since the successful deployment of WFX in 2014, SAPL has experienced many benefits that have significantly enhanced their operations and productivity.

Some of the benefits SAPL has gained from using WFX ERP include

- **More Data Security:** WFX's robust system prevented unauthorized alterations, providing a secure environment for SAPL's data.
- **Operational Efficiency:** The streamlined processes reduced manual work and increased accuracy in operations.
- **Comprehensive Tracking:** WFX allowed detailed tracking of changes, corrections, and updates, improving transparency across the company.
- **Reduction in Manual Tasks:** Automating routine tasks has allowed employees to focus on more strategic activities and improve operational efficiency.
- **Improved Decision Making:** With better data management and reporting capabilities, SAPL could make more informed decisions.
- **Time Savings:** Automation and integration saved considerable time across various departments.
- **Scalability:** WFX supported SAPL's growth, handling increased operational complexity as the company expanded.

Benefits

- More Data Security
- Operational Efficiency
- Comprehensive Tracking
- Reduction in Manual Tasks
- Improved Decision Making
- Time Savings
- Scalability



WFX has revolutionized how we operate at SAPL. The system's seamless process integration and robust functionality have significantly reduced our manual workload, enabling us to focus on innovation and growth. The clarity and efficiency we have achieved with WFX are truly remarkable.

- Arun Deep

Assistant Manager - MIS (ERP),
SAPL Industries Pvt Ltd



In my years of experience with various ERP systems, WFX is by far the best for the garment industry. It connects our entire supply chain, ensuring that no process can be skipped and each step must be completed before moving on. It's user-friendly, robust, and perfectly tailored to our needs. Working with WFX, you really see the difference—it streamlines everything and keeps us on track. Simply put, WFX is the number one software in my book.



- Arun Deep

Assistant Manager - MIS (ERP), SAPL Industries Pvt Ltd



Discover how our digital transformation solutions can help you get to market faster, become more sustainable, and streamline your operations for scalable success.

[Book Demo](#)

[More Case Studies](#) →